



GMT MONTHLY MEMBERSHIP PROGRESS REPORT

Results as of: 2/29/2020

GMT Constitutional Area 8, Group E

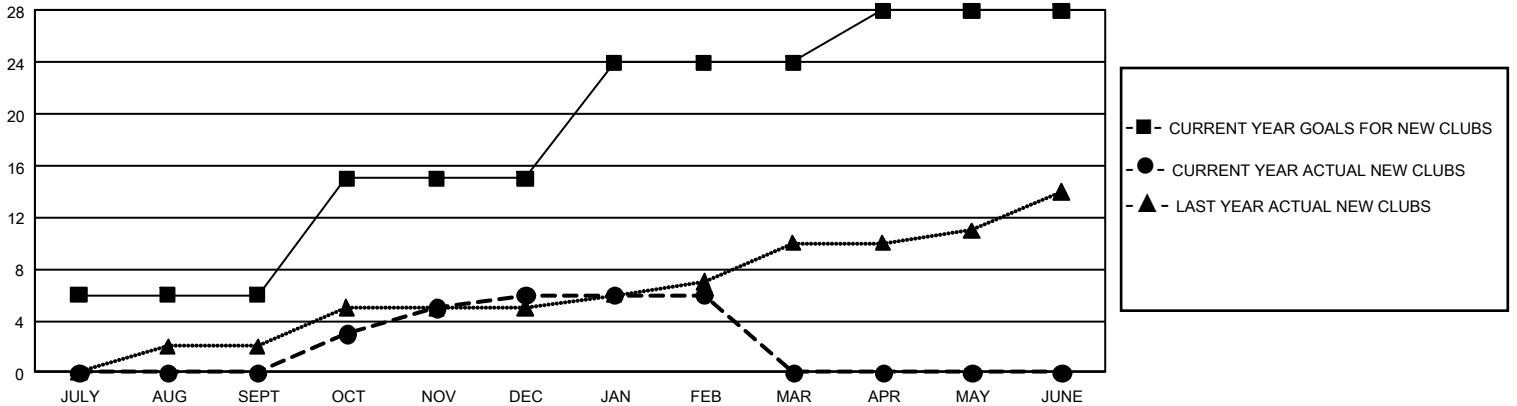
GMT: OPEN

REPORT DOES NOT INCLUDE CLUBS IN UNDISTRICTED AREAS.

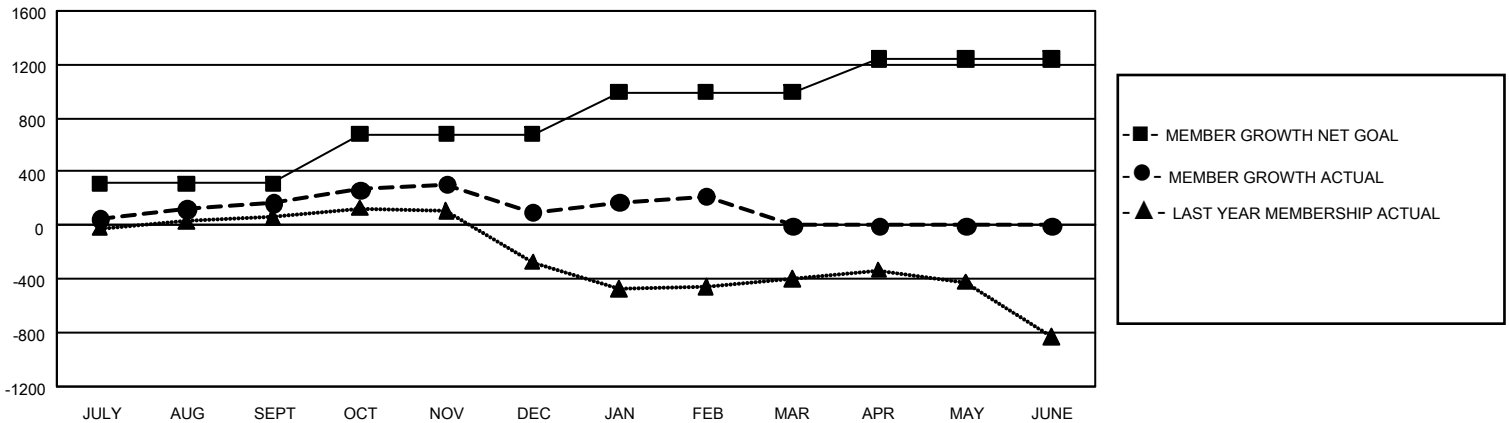
Clubs			
RESULTS FOR 2019-2020			
QUARTER	NEW CLUB GOAL	NEW CLUBS	DROPPED CLUBS
JULY/AUG/SEPT	18	0	2
OCT/NOV/DEC	27	6	9
JAN/FEB/MAR	27	0	1
APR/MAY/JUNE	12	0	0

Members			
RESULTS FOR 2019-2020			
QUARTER	MEMBER GROWTH NET GOAL	MEMBER GROWTH ACTUAL	DROPPED MEMBERS ACTUAL (including transfers)
JULY/AUG/SEPT	936	357	164
OCT/NOV/DEC	1,101	400	460
JAN/FEB/MAR	951	172	40
APR/MAY/JUNE	735	0	0

GOALS AND ACTUAL NEW CLUBS CUMULATIVE



GOALS AND ACTUAL MEMBERS CUMULATIVE



DROPPED CLUBS: 12	137 CLUBS OF 252 ADDED 1 OR MORE NEW MEMBERS	GENDER DISTRIBUTION	
		MALE 3,759 (59.62%)	FEMALE 2,546 (40.38%)
DROPPED MEMBERS		TOTAL FAMILY UNIT MEMBERS 1,522	
DECEASED 12	CLICK HERE FOR CUMULATIVE MEMBERSHIP DATA	FAMILY MEMBERS PAYING HALF DUES 883	
CLUB CANCELLED 154			
OTHER 498			
TOTAL 664			